

ON THE LEVEL

A STENERSON LUMBER PUBLICATION

STENERSON SPOTLIGHT ON SERVICE

Joel Nelson has been an employee of StenerSON Lumber for over 20 years. He began his career as Hardware Manager in the old South Moorhead Yard in 1987. After a few years, he was promoted to Assistant Manager, which he held for some time, and when the two Moorhead yards were combined, Joel spent some time working in the sales department. When we opened our store in Wahpeton in 1997, he and his family moved to Breckenridge and he managed the store for about 5 years. He then spent a few years back in Moorhead before moving with his family to Detroit Lakes in 2007 to manage the lumberyard there. He has come to love the lakes area and regards his decision to move as a highly positive experience. Joel has always worked in the hardware and building business. Upon graduating from Junior College in Thief River Falls in Sales & Business Management, he worked at a local hardware chain for a couple years before being hired at StenerSON Lumber. He feels that he is a jack-of-all-trades and loves the variety that his job presents everyday. There are always new products and techniques to learn about and he loves to meet new people. In fact, his favorite part of his job is working with the people – the customers and employees – who make life fun. In his spare time, he enjoys snowmobiling and jet-skiing and spending time with his wife and two children. There is also a little farmer in him and he spends quite a bit of time seasonally helping out at his family’s farm near Stephen, MN. Joel can be reached in the Detroit Lakes location at 218-847-2188.



2010 SUMMER HOURS

Monday – Friday
7:30 am to 5:00 pm

Saturdays
(DL, Crosby, & Mhd)
8:00 am to 12:00 pm

**As always
- FREE DELIVERY -
call for yours today!**

PRODUCT SALES

Casey Beckerleg, Mhd
Steve Breyer, Mhd
Steve Gease, FF
Rich Harris, Crosby
Bill Jackson, DL
Craig Johansen, FF
Arden Laine, DL
Scott Mollberg, Mhd

STENERSON LUMBER LOCATIONS

555 Hwy 59 N
Detroit Lakes, MN
218-847-2188

22348 Hwy 6 and 210
Crosby, MN
218-546-6535

324 Washington Ave E
Fergus Falls, MN
218-739-4481

1702 1st Ave N
Moorhead, MN
218-233-2754

Exteriors Unlimited
218-846-1778

Pro Builder Lending
218-233-3437

STENERSON LUMBER

TAKE ME OUT TO THE BALL GAME

Mark your calendar for our second annual Redhawks outing on **Thursday, August 19th**. The event will be similar to last year’s (although we’re hoping for better weather) with free transportation, a field-side picnic, and tickets to see the F-M Redhawks take on the Winnipeg Goldeyes. Busses will leave from Fergus Falls and Detroit Lakes at 4:45 pm with the game starting at 7 pm. Moorhead fans should plan to meet at Newman Outdoor Field in Fargo at about 6 pm for the picnic. For more information and to sign up, contact your salesman; but don’t delay, there are limited spots available.

JULY STENERSON SPECIAL

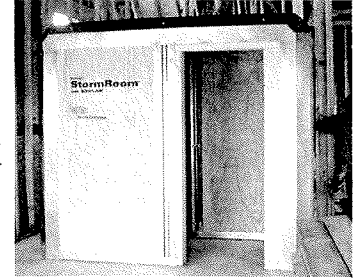


**15% OFF ALL
DECK STAINS
AND SEALANTS**

Restore, maintain, and protect your deck with popular brands such as Superdeck, Sikkens, and Ace

WEATHERING THE STORM IN WADENA

After donating use of our equipment to help Wadena clean up after the tornado ripped through their town last month, we noticed that there are a few of you listed on the contractor referral sheet distributed by the city. Please consider that we will offer free delivery to the Wadena area from our Detroit Lakes lumberyard. Our sales staff will be happy to travel to the area to meet with your clients as it fits your schedules. Please let us know if there is anything else we can do to help any of those affected by the storm or those working on rebuilding. Also, please keep in mind, for those customers concerned with storm protection, that we are an authorized Dupont Storm Room installer (new construction or retrofit) and can assist builders with plans to add a poured storm cellar to their home created with Insulated Concrete Forms (ICFs).



SHARP IDEA – MAG SHEAR LITE



Now available at Stenerson Lumber: a versatile flooring and siding cutter that saves you time and money. The new Mag Shear Lite from Bullet Tools is a lever operated manual shear that works on a wide variety of flooring and siding products. Weighing just 12 lbs, it is easily moved about the jobsite – saving time of running back and forth from a messy saw. It is a dustless, noise-less, electricity-free shear, making it truly portable on any project site. Its 13-inch wide blade, precisely cuts up to 7/16-inch deep material such as Hardiplank siding, laminate flooring, PVC tile, vinyl siding, pressboard lapsiding, and engineered wood. It includes a built in fence and easy to use safety lock. It also carries a 1-year manufacturer's warranty.

CONSTRUCTION SITE WHODUNNIT

A workman was killed at a construction site. The police began questioning a number of the other workers. Based on past brushes with the law, many of these workers were considered prime suspects. They were a motley crew:

- ? The carpenter thought he was a stud. He tried to frame another man one time.
- ? The electrician was suspected of wiretapping once but was never charged.
- ? The glazier went to great panes to conceal his past. He still claims that he didn't do anything; that he was framed.
- ? The painter had a brush with the law several years ago.
- ? The heating, ventilation and air conditioning contractor was known to pack heat. He was arrested once but duct the charges.
- ? The mason was suspect because he gets stoned regularly.
- ? The cabinet maker is an accomplished counter fitter.



The autopsy led the police to arrest the carpenter, who subsequently confessed. The evidence against him was irrefutable, because it was found that the workman, when he died, was hammered.

FOR MORE INFORMATION

For more information or for further discussion on the articles contained in this newsletter please contact your Stenerson Lumber salesperson. We are open to suggestions on future topics; just let us know what you'd like to see. If you'd like to be added or removed from our mailing list or have an address correction, please call the General Office at 218-233-3437.